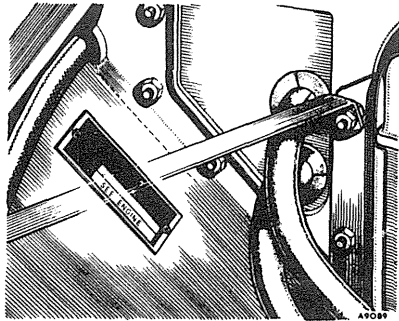
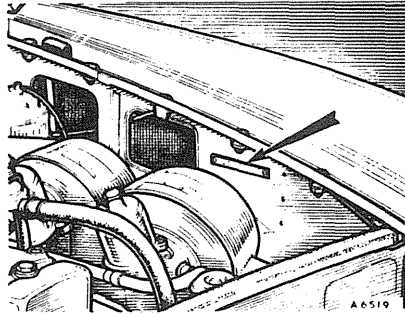


Location of Unit Numbers

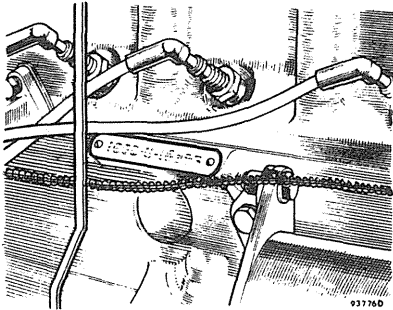
NOT V8



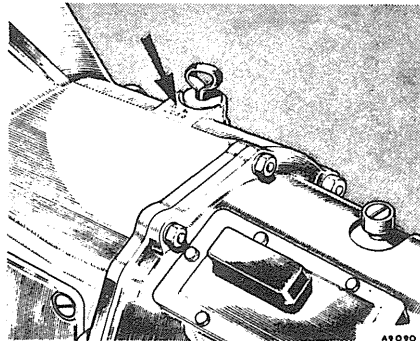
The **Car Number** is stamped on a plate secured to the left-hand wing valance forward of the radiator



The **Body Number** is stamped on a plate secured to the left-hand front valance behind the radiator diaphragm



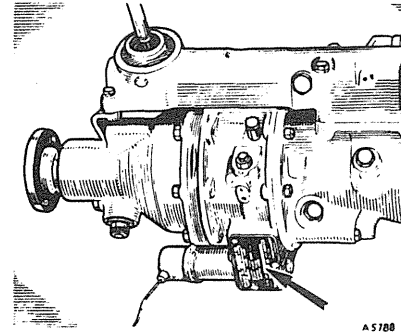
The **Engine Number** is stamped on a plate secured to the right-hand side of the cylinder block



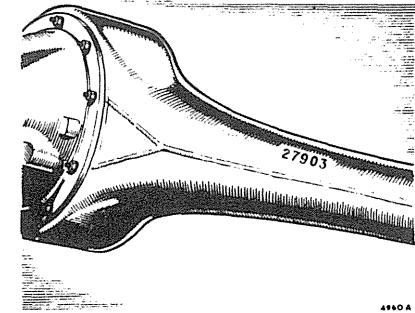
The **Gearbox Number** is stamped on the top of the gear-box casing adjacent to the dipstick

Location of Unit Numbers—continued

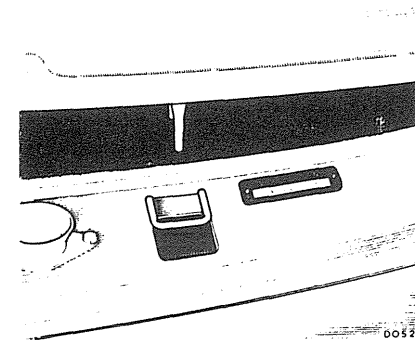
NOT V8—continued



The **Overdrive Unit Number** is stamped on the solenoid side cover on the right-hand side of the unit



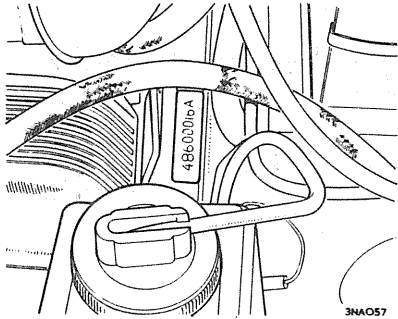
The **Rear Axle Number** is stamped on the front of the axle tube on the left-hand side adjacent to the spring seat



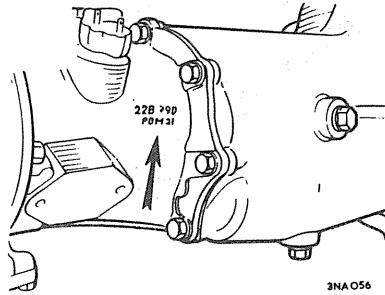
The **Commission Number** is stamped on a plate secured to the bonnet lock platform

LOCATION OF UNIT NUMBERS—continued

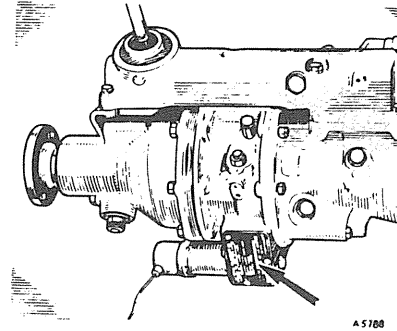
V8



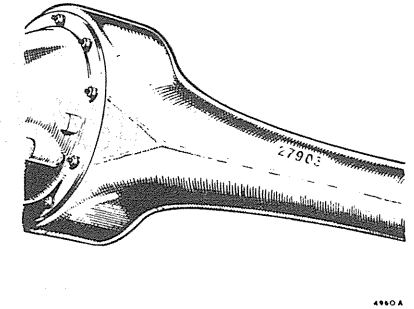
The Engine Number is stamped on a plate secured to the left-hand side at the rear of the cylinder block, adjacent to the bell housing



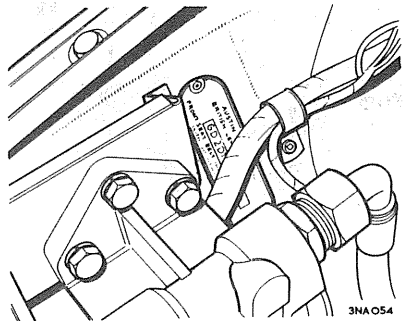
The Gearbox Number is stamped on top of the gearbox casing



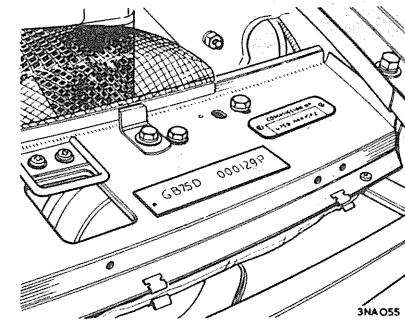
The Overdrive Unit Number is stamped on the solenoid side cover on the right-hand side of the unit



The Rear Axle Number is stamped on the front of the axle tube on the left-hand side adjacent to the spring seat



The Car Number is stamped on a plate secured to the RH wing valance adjacent to the filter



The Body and Commission Numbers are stamped on plates secured to the bonnet lock platform